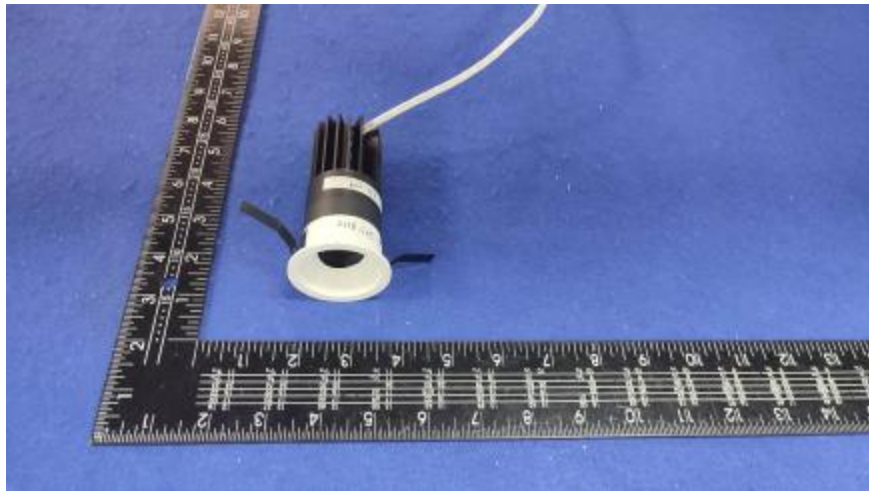


Luminaire Photograph



Light Output Ratio:	71.1%	
Luminaire Power:	9.36 W	
SHR Nominal:	0.75	Calculated using the TM5
SHR Maximum:	0.80	fine grid method.

C Range: 0 - 360DEG
C Interval: 30.0DEG
Test Speed: HIGH
Temperature: 25.3 °C
Operators: Zoe
Test Date: 2022-11-2

γ Range: 0 - 180DEG
γ Interval: 1.0DEG
Test System: EVERFINE GO-SPEX500_V1 SYSTEM V2.00.416
Humidity: 65.0%
Test Distance: 3.160m [K=1.0000]
Remarks: LAMP: CMA1306-0000-000F0U0A30G Ra:90
LENS: PM-1084C 50R
NO DRIVER: 500mA
30minutes warm-up

LUMINOUS INTENSITY DISTRIBUTION DIAGRAM

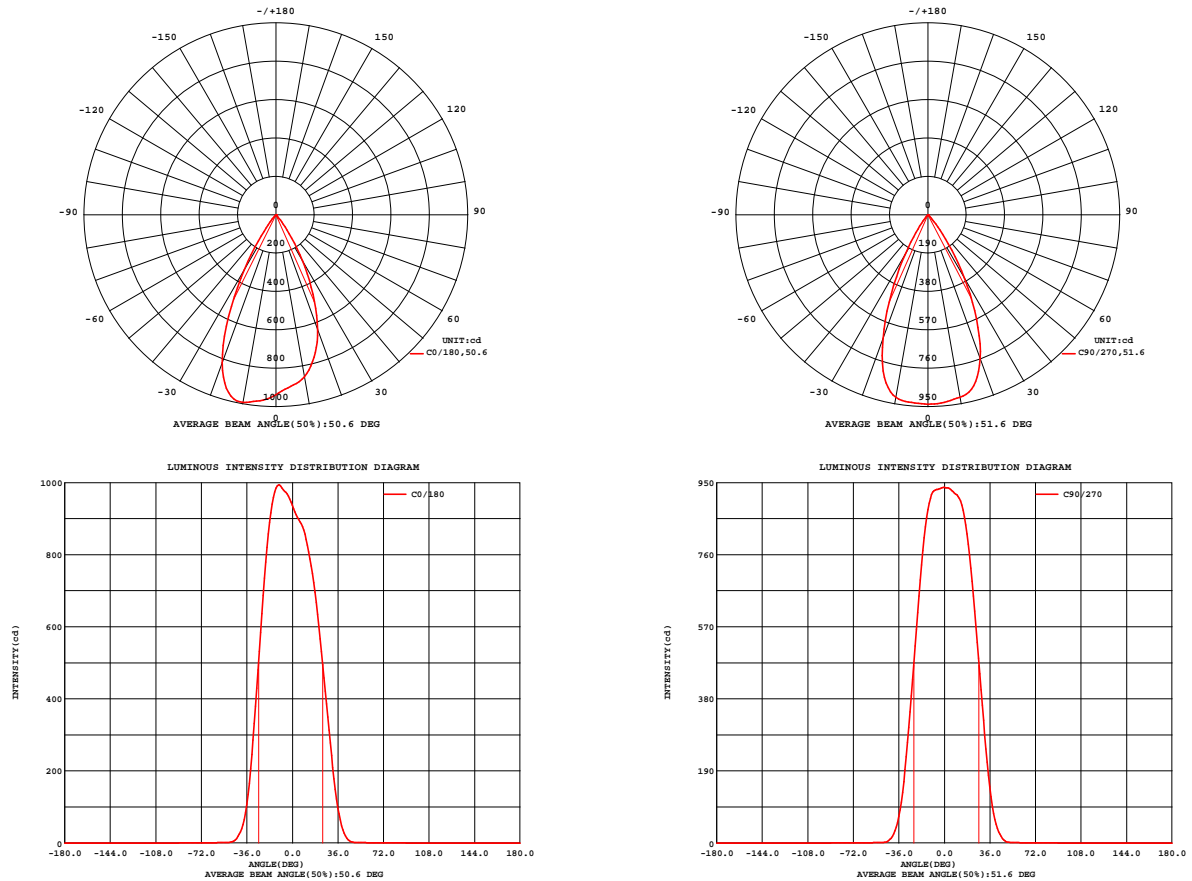


Fig. C0/C180

Fig. C90/C270

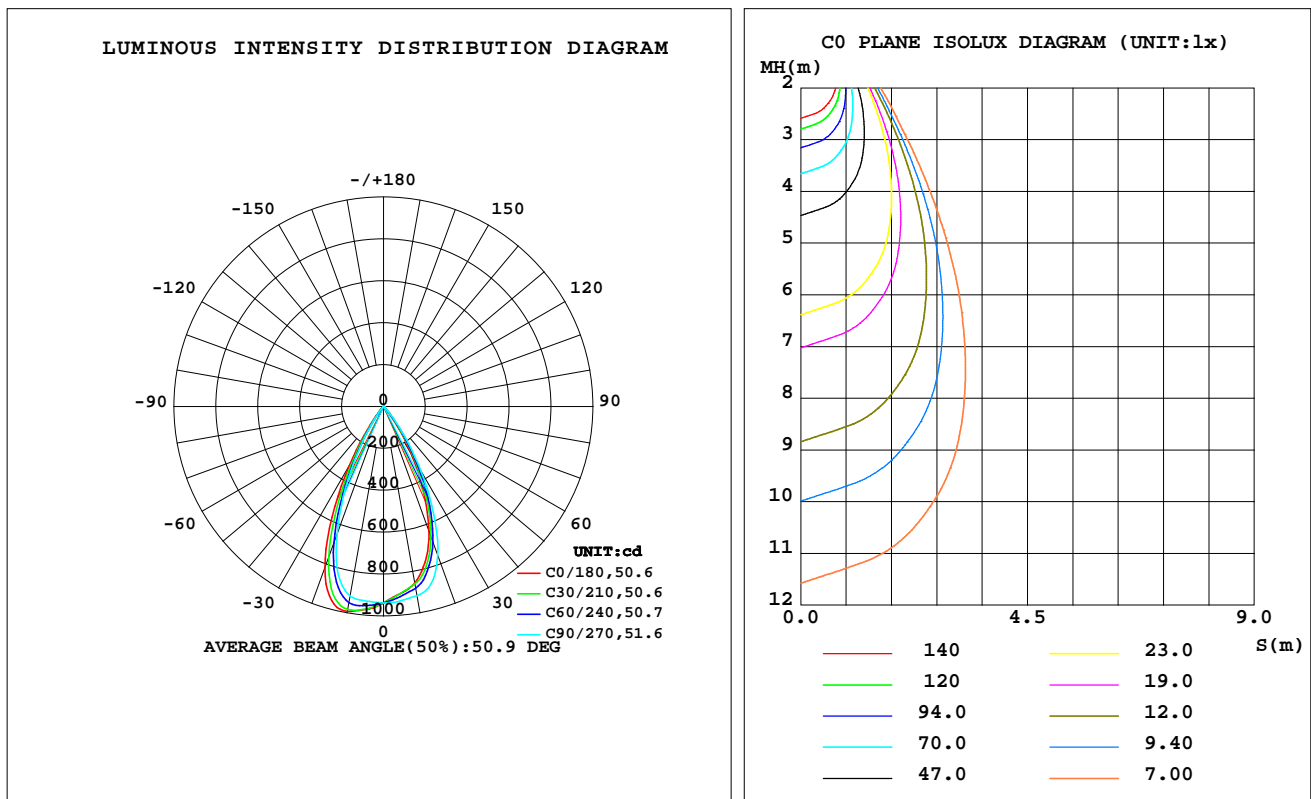
C Range: 0 - 360DEG
C Interval: 30.0DEG
Test Speed: HIGH
Temperature: 25.3 °C
Operators: Zoe
Test Date: 2022-11-2

γ Range: 0 - 180DEG
γ Interval: 1.0DEG
Test System: EVERFINE GO-SPEX500_V1 SYSTEM V2.00.416
Humidity: 65.0%
Test Distance: 3.160m [K=1.0000]
Remarks: LAMP: CMA1306-0000-000F0U0A30G Ra: 90
LENS: PM-1084C 50R
NO DRIVER: 500mA
30minutes warm-up

LUMINAIRE PHOTOMETRIC TEST REPORT

Test:U:18.728V I:0.4998A P:9.3602W PF:1.0000 Freq:59.98Hz Lamp Flux:919.82x1 lm		
NAME: 2118.565-LEA-09B	TYPE:	WEIGHT:
SPEC.: 3000K	DIM.:	SERIAL No.: 2211021100
MFR.: RISE	SUR.: 0.001256m2	Shielding Angle:

DATA OF LAMP		PHOTOMETRIC DATA Eff: 69.89 lm/W			
MODEL	CREE	I _{max} (cd)	993.2	S/MH(C0/180)	0.80
NOMINAL POWER(W)	9	LOR(%)	71.1	S/MH(C90/270)	0.73
RATED VOLTAGE(V)	18	TOTAL FLUX(lm)	654.18	η UP,DN(C0-180)	0.0,37.2
NOMINAL FLUX(lm)	919.82	CIE CLASS	DIRECT	η UP,DN(C180-360)	0.0,33.9
LAMPS INSIDE	1	η up(%)	0.0	CIBSE SHR NOM	0.75
TEST VOLTAGE(V)	18	η down(%)	71.1	CIBSE SHR MAX	0.80



C Range: 0 - 360DEG
C Interval: 30.0DEG
Test Speed: HIGH
Temperature:25.3℃
Operators:Zoe
Test Date:2022-11-2

γ Range: 0 - 180DEG
γ Interval: 1.0DEG
Test System:EVERFINE GO-SPEX500_V1 SYSTEM V2.00.416
Humidity:65.0%
Test Distance:3.160m [K=1.0000]
Remarks: LAMP:CMA1306-0000-000F0U0A30G Ra:90
LENS:PM-1084C 50R
NO DRIVER:500mA
30minutes warm-up

ZONAL FLUX DIAGRAM

ZONAL FLUX DIAGRAM:

γ	C0	C45	C90	C135	C180	C225	C270	C315	γ	Φ zone	Φ total	%lum,lamp
10	856.4	870.7	917.1	966.2	993.1	967.4	918.0	883.0	0- 10	88.79	88.79	13.6,9.65
20	634.6	676.8	757.7	812.6	820.1	730.7	651.1	636.7	10- 20	236.2	325.0	49.7,35.3
30	277.6	323.2	363.1	364.8	331.9	261.8	227.6	252.9	20- 30	230.0	555.0	84.8,60.3
40	36.60	52.55	61.93	53.35	39.63	29.32	24.21	29.18	30- 40	87.52	642.5	98.2,69.8
50	1.606	1.829	2.252	2.126	1.689	1.403	1.180	1.263	40- 50	9.615	652.1	99.7,70.9
60	0.8340	0.7899	0.8090	0.8197	0.8741	0.8008	0.7810	0.7815	50- 60	0.9712	653.1	99.8,71
70	0.4410	0.4712	0.5165	0.5171	0.5097	0.4725	0.4453	0.4341	60- 70	0.6631	653.7	99.9,71.1
80	0.1779	0.1991	0.2281	0.2259	0.2241	0.1939	0.1752	0.1669	70- 80	0.3479	654.1	100,71.1
90	0	0	0	0	0	0	0	0	80- 90	0.0952	654.2	100,71.1
100	0	0	0	0	0	0	0	0	90-100	0	654.2	100,71.1
110	0	0	0	0	0	0	0	0	100-110	0	654.2	100,71.1
120	0	0	0	0	0	0	0	0	110-120	0	654.2	100,71.1
130	0	0	0	0	0	0	0	0	120-130	0	654.2	100,71.1
140	0	0	0	0	0	0	0	0	130-140	0	654.2	100,71.1
150	0	0	0	0	0	0	0	0	140-150	0	654.2	100,71.1
160	0	0	0	0	0	0	0	0	150-160	0	654.2	100,71.1
170	0	0	0	0	0	0	0	0	160-170	0	654.2	100,71.1
180	0	0	0	0	0	0	0	0	170-180	0	654.2	100,71.1
DEG	LUMINOUS INTENSITY:cd									UNIT:lm		

C Range: 0 - 360DEG
C Interval: 30.0DEG
Test Speed: HIGH
Temperature:25.3℃
Operators:Zoe
Test Date:2022-11-2

γ Range: 0 - 180DEG
 γ Interval: 1.0DEG
Test System:EVERFINE GO-SPEX500_V1 SYSTEM V2.00.416
Humidity:65.0%
Test Distance:3.160m [K=1.0000]
Remarks: LAMP:CMA1306-0000-000F0U0A30G Ra:90
LENS:PM-1084C 50R
NO DRIVER:500mA
30minutes warm-up

LUMINANCE LIMITATION CURVES

Test:U:18.728V I:0.4998A P:9.3602W PF:1.0000 Freq:59.98Hz
Lamp Flux:919.82x1 lm

NAME: 2118.565-LEA-09B

TYPE:

WEIGHT:

SPEC.: 3000K

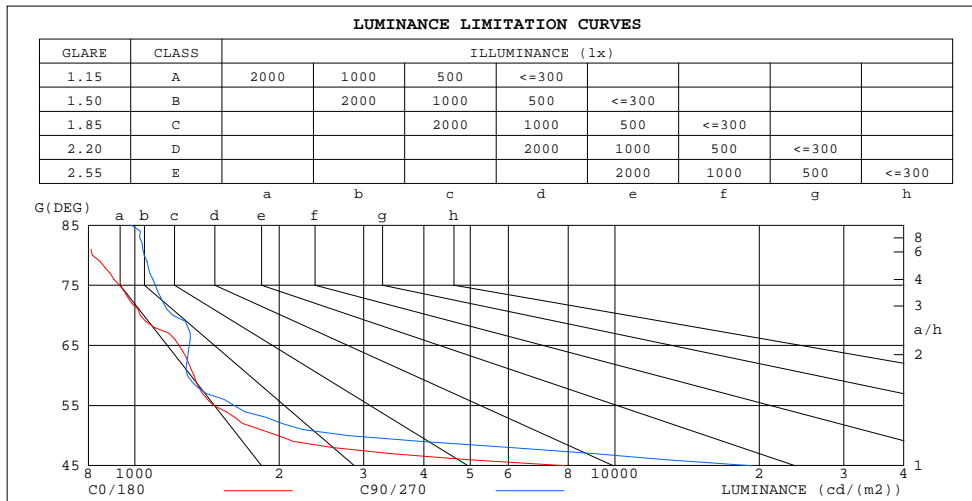
DIM.:

SERIAL No.: 2211021100

MFR.: RISE

SUR.: 0.001256m2

Shielding Angle:



LUMINANCE cd/(m2)		
G(180)	C0/180	C90/270
85	703	986
80	816	1045
75	929	1103
70	1027	1202
65	1237	1299
60	1329	1287
55	1462	1613
50	1990	2787
45	7913	19306

C Range: 0 - 360DEG
C Interval: 30.0DEG
Test Speed: HIGH
Temperature:25.3℃
Operators:Zoe
Test Date:2022-11-2

γ Range: 0 - 180DEG
γ Interval: 1.0DEG
Test System:EVERFINE GO-SPEX500_V1 SYSTEM V2.00.416
Humidity:65.0%
Test Distance:3.160m [K=1.0000]
Remarks: LAMP:CMA1306-0000-000F0U0A30G Ra:90
LENS:PM-1084C 50R
NO DRIVER:500mA
30minutes warm-up

CU AND LUMINAIRE BUDGETARY ESTIMATE DIAGRAM

Test:U:18.728V I:0.4998A P:9.3602W PF:1.0000 Freq:59.98Hz
Lamp Flux:919.82x1 lm

NAME: 2118.565-LEA-09B

TYPE:

WEIGHT:

SPEC.: 3000K

DIM.:

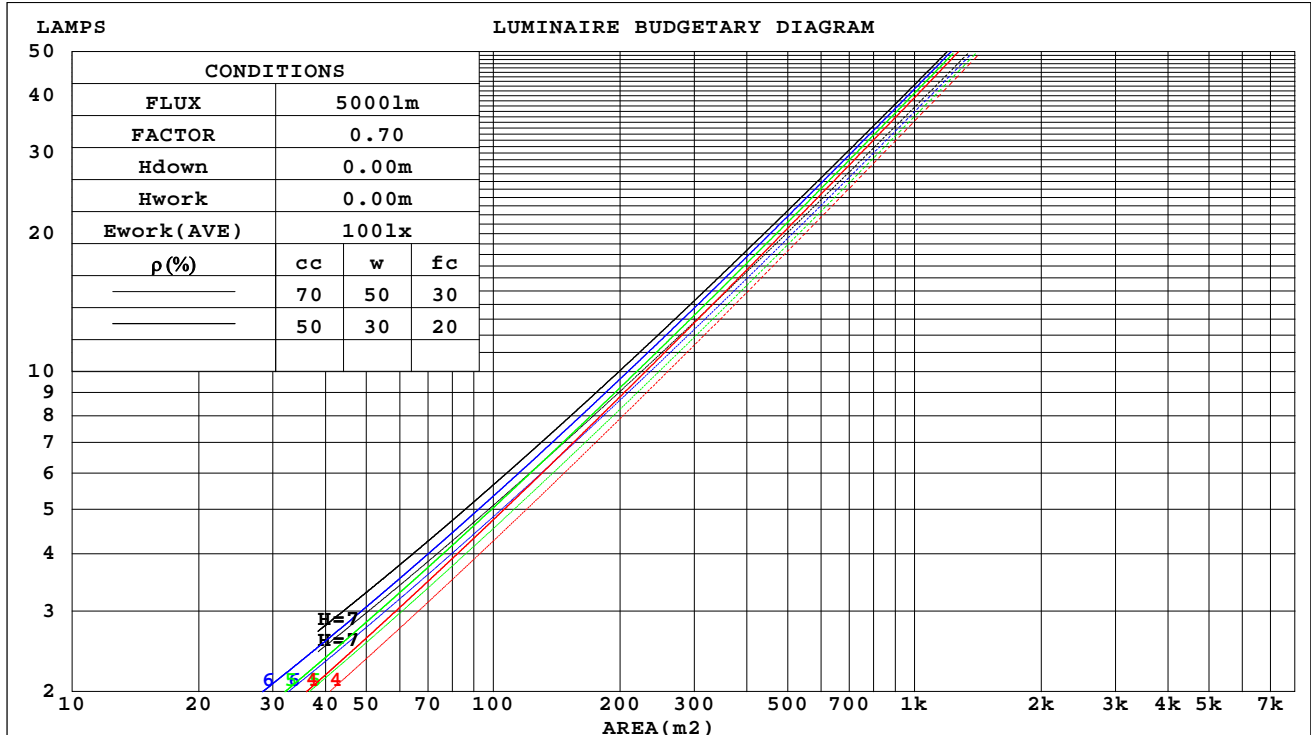
SERIAL No.: 2211021100

MFR.: RISE

SUR.: 0.001256m2

Shielding Angle:

ρ_{cc}	80%			70%			50%			30%			10%			0
ρ_w	50%	30%	10%	50%	30%	10%	50%	30%	10%	50%	30%	10%	50%	30%	10%	0
ρ_{fc}	20%			20%			20%			20%			20%			0
RCR	RCR:Room Cavity Ratio			Coefficients of Utilization(CU)												
0.0	.85	.85	.85	.83	.83	.83	.79	.79	.79	.76	.76	.76	.73	.73	.73	.71
1.0	.79	.78	.76	.78	.76	.75	.75	.74	.73	.72	.71	.71	.70	.69	.69	.67
2.0	.74	.72	.70	.73	.71	.69	.71	.69	.67	.69	.67	.66	.67	.66	.65	.64
3.0	.70	.67	.64	.69	.66	.64	.67	.65	.63	.66	.64	.62	.64	.62	.61	.60
4.0	.66	.63	.60	.65	.62	.60	.64	.61	.59	.63	.60	.58	.61	.59	.58	.57
5.0	.63	.59	.56	.62	.58	.56	.61	.58	.55	.60	.57	.55	.58	.56	.54	.53
6.0	.59	.55	.53	.59	.55	.53	.58	.55	.52	.57	.54	.52	.56	.53	.52	.51
7.0	.56	.52	.50	.56	.52	.50	.55	.52	.49	.54	.51	.49	.53	.51	.49	.48
8.0	.53	.50	.47	.53	.49	.47	.52	.49	.47	.52	.49	.47	.51	.48	.46	.45
9.0	.51	.47	.45	.51	.47	.44	.50	.47	.44	.49	.46	.44	.49	.46	.44	.43
10.0	.49	.45	.42	.48	.45	.42	.48	.44	.42	.47	.44	.42	.47	.44	.42	.41



C Range: 0 - 360DEG
C Interval: 30.0DEG
Test Speed: HIGH
Temperature:25.3 °C
Operators:Zoe
Test Date:2022-11-2

γ Range: 0 - 180DEG
 γ Interval: 1.0DEG
Test System:EVERFINE GO-SPEX500_V1 SYSTEM V2.00.416
Humidity:65.0%
Test Distance:3.160m [K=1.0000]
Remarks: LAMP:CMA1306-0000-000F0U0A30G Ra:90
LENS:PM-1084C 50R
NO DRIVER:500mA
30minutes warm-up

WEC AND CCEC

Test:U:18.728V I:0.4998A P:9.3602W PF:1.0000 Freq:59.98Hz Lamp Flux:919.82x1 lm		
NAME: 2118.565-LEA-09B	TYPE:	WEIGHT:
SPEC.: 3000K	DIM.:	SERIAL No.: 2211021100
MFR.: RISE	SUR.: 0.001256m2	Shielding Angle:

pcc	80%			70%			50%			30%			10%			0
pw	50%	30%	10%	50%	30%	10%	50%	30%	10%	50%	30%	10%	50%	30%	10%	0
pfc	20%			20%			20%			20%			20%			0
RCR	RCR:Room Cavity Ratio						Wall Exitance Coefficients(WEC)									
0.0																
1.0	.116	.066	.021	.111	.064	.020	.102	.059	.019	.094	.054	.017	.087	.050	.016	
2.0	.110	.060	.019	.106	.058	.018	.099	.055	.017	.092	.052	.016	.085	.048	.015	
3.0	.104	.056	.017	.101	.054	.016	.095	.051	.016	.089	.049	.015	.084	.046	.014	
4.0	.099	.052	.015	.096	.050	.015	.091	.048	.014	.086	.046	.014	.081	.044	.013	
5.0	.095	.048	.014	.092	.047	.014	.087	.046	.013	.083	.044	.013	.079	.042	.013	
6.0	.090	.045	.013	.088	.045	.013	.084	.043	.013	.080	.042	.012	.077	.040	.012	
7.0	.087	.043	.012	.085	.042	.012	.081	.041	.012	.078	.040	.012	.074	.039	.011	
8.0	.083	.041	.011	.081	.040	.011	.078	.039	.011	.075	.038	.011	.072	.037	.011	
9.0	.080	.039	.011	.078	.038	.011	.075	.037	.011	.073	.036	.010	.070	.036	.010	
10.0	.077	.037	.010	.075	.036	.010	.073	.036	.010	.070	.035	.010	.068	.034	.010	

pcc	80%			70%			50%			30%			10%			0
pw	50%	30%	10%	50%	30%	10%	50%	30%	10%	50%	30%	10%	50%	30%	10%	0
pfc	20%			20%			20%			20%			20%			0
RCR	RCR:Room Cavity Ratio						Ceiling Cavity Exitance Coefficients(CCEC)									
0.0	.135	.135	.135	.116	.116	.116	.079	.079	.079	.045	.045	.045	.015	.015	.015	
1.0	.121	.112	.104	.104	.096	.089	.071	.066	.062	.041	.038	.036	.013	.012	.012	
2.0	.110	.094	.081	.094	.081	.070	.064	.056	.049	.037	.033	.029	.012	.011	.009	
3.0	.100	.081	.065	.086	.070	.057	.059	.048	.040	.034	.028	.023	.011	.009	.008	
4.0	.092	.070	.053	.079	.061	.046	.054	.042	.032	.032	.025	.019	.010	.008	.006	
5.0	.086	.062	.044	.074	.053	.038	.051	.037	.027	.029	.022	.016	.009	.007	.005	
6.0	.080	.055	.037	.069	.048	.032	.048	.033	.023	.028	.020	.013	.009	.006	.004	
7.0	.076	.049	.031	.065	.043	.027	.045	.030	.019	.026	.018	.011	.008	.006	.004	
8.0	.071	.045	.027	.062	.039	.023	.043	.027	.016	.025	.016	.010	.008	.005	.003	
9.0	.068	.041	.023	.058	.036	.020	.041	.025	.014	.024	.015	.009	.008	.005	.003	
10.0	.065	.038	.020	.056	.033	.018	.039	.023	.013	.023	.014	.007	.007	.005	.002	

C Range: 0 - 360DEG
C Interval: 30.0DEG
Test Speed: HIGH
Temperature:25.3℃
Operators:Zoe
Test Date:2022-11-2

γ Range: 0 - 180DEG
γ Interval: 1.0DEG
Test System:EVERFINE GO-SPEX500_V1 SYSTEM V2.00.416
Humidity:65.0%
Test Distance:3.160m [K=1.0000]
Remarks: LAMP:CMA1306-0000-000F0U0A30G Ra:90
LENS:PM-1084C 50R
NO DRIVER:500mA
30minutes warm-up

UGR(Unified Glare Rating) Table

Test:U:18.728V I:0.4998A P:9.3602W PF:1.0000 Freq:59.98Hz Lamp Flux:919.82x1 lm										
NAME: 2118.565-LEA-09B					TYPE:			WEIGHT:		
SPEC.: 3000K					DIM.:			SERIAL No.: 2211021100		
MFR.: RISE					SUR.: 0.001256m2			Shielding Angle:		
ceiling/cavity	0.7	0.7	0.5	0.5	0.3	0.7	0.7	0.5	0.5	0.3
walls	0.5	0.3	0.5	0.3	0.3	0.5	0.3	0.5	0.3	0.3
working plane	0.2	0.2	0.2	0.2	0.2	0.2	0.2	0.2	0.2	0.2
Room dimensions	Viewed crosswise					Viewed endwise				
x = 2H y = 2H	19.1	20.0	19.4	20.2	20.3	20.5	21.4	20.8	21.6	21.7
3H	19.0	19.8	19.2	20.0	20.2	20.4	21.2	20.6	21.4	21.6
4H	18.9	19.6	19.2	19.9	20.1	20.3	21.0	20.6	21.2	21.5
6H	18.8	19.5	19.1	19.7	20.0	20.2	20.9	20.5	21.1	21.4
8H	18.8	19.4	19.1	19.7	19.9	20.2	20.8	20.5	21.1	21.3
12H	18.7	19.4	19.0	19.6	19.9	20.1	20.8	20.4	21.0	21.3
4H 2H	18.9	19.6	19.2	19.9	20.1	20.3	21.0	20.6	21.2	21.5
3H	18.7	19.4	19.0	19.6	19.9	20.1	20.8	20.4	21.0	21.3
4H	18.6	19.2	19.0	19.5	19.8	20.0	20.6	20.4	20.9	21.2
6H	18.5	19.1	18.9	19.4	19.7	19.9	20.4	20.3	20.8	21.1
8H	18.5	19.0	18.9	19.3	19.7	19.9	20.4	20.3	20.7	21.1
12H	18.4	18.9	18.8	19.2	19.6	19.8	20.3	20.2	20.6	21.0
8H 4H	18.5	19.0	18.9	19.3	19.7	19.9	20.4	20.3	20.7	21.1
6H	18.4	18.8	18.8	19.2	19.6	19.8	20.2	20.2	20.6	21.0
8H	18.3	18.7	18.8	19.1	19.5	19.7	20.1	20.2	20.5	20.9
12H	18.3	18.6	18.7	19.0	19.5	19.7	20.0	20.1	20.4	20.9
12H 4H	18.4	18.9	18.8	19.2	19.6	19.8	20.3	20.2	20.6	21.0
6H	18.3	18.7	18.8	19.1	19.5	19.7	20.1	20.2	20.5	20.9
8H	18.3	18.6	18.7	19.0	19.5	19.7	20.0	20.1	20.4	20.9
Variations with the observer position at spacings(CIE Pub.117):										
S = 1.0H	+ 3.7 / -14.6					+ 4.4 / -16.2				
1.5H	+ 6.5 / -14.0					+ 7.1 / -15.7				
2.0H	+ 6.0 / - 2.3					+ 8.8 / - 5.2				

CIE Pub.117, 919.8 lm Total Lamp Luminous Flux Correct (8log(F/F0) = -0.3)
Area: 0.001256 m2

C Range: 0 - 360DEG
C Interval: 30.0DEG
Test Speed: HIGH
Temperature:25.3℃
Operators:Zoe
Test Date:2022-11-2

γ Range: 0 - 180DEG
γ Interval: 1.0DEG
Test System:EVERFINE GO-SPEX500_V1 SYSTEM V2.00.416
Humidity:65.0%
Test Distance:3.160m [K=1.0000]
Remarks: LAMP:CMA1306-0000-000F0U0A30G Ra:90
LENS:PM-1084C 50R
NO DRIVER:500mA
30minutes warm-up

UTILIZATION FACTORS TABLE

Test:U:18.728V I:0.4998A P:9.3602W PF:1.0000 Freq:59.98Hz Lamp Flux:919.82x1 lm		
NAME: 2118.565-LEA-09B	TYPE:	WEIGHT:
SPEC.: 3000K	DIM.:	SERIAL No.: 2211021100
MFR.: RISE	SUR.: 0.001256m2	Shielding Angle:

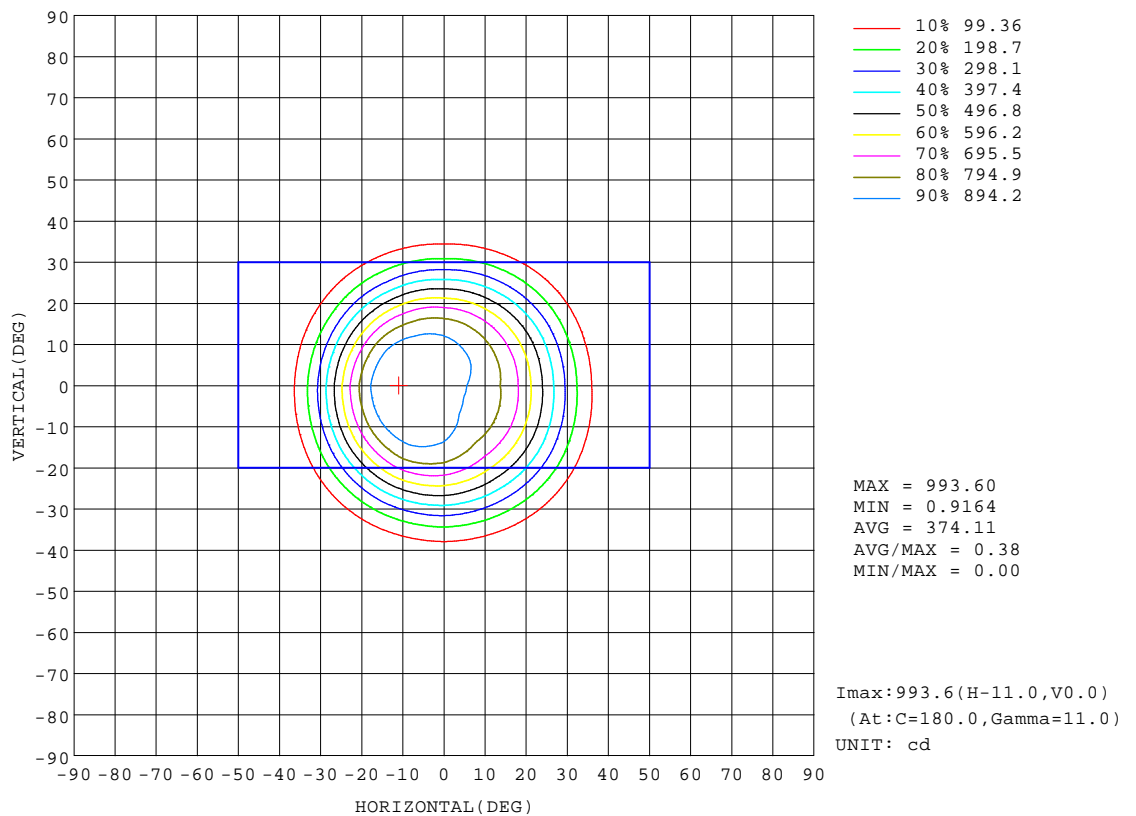
REFLECTANCE										
Ceiling	0.8	0.8	0.8	0.7	0.7	0.7	0.5	0.5	0.5	0
Walls	0.7	0.5	0.3	0.7	0.5	0.3	0.7	0.5	0.3	0
Working plane	0.2	0.2	0.2	0.2	0.2	0.2	0.2	0.2	0.2	0
ROOM INDEX	UTILIZATION FACTORS(PERCENT) $k(RI) \times RCR = 5$									
k = 0.60	64	60	58	64	60	58	63	60	58	55
0.80	69	66	63	69	65	63	68	65	63	60
1.00	72	68	66	72	68	66	70	68	66	63
1.25	75	71	69	74	71	69	73	70	68	65
1.50	76	73	71	76	73	71	74	72	70	67
2.00	78	75	73	77	75	73	75	73	72	68
2.50	79	77	75	78	76	74	76	74	73	69
3.00	80	78	76	79	77	75	76	75	74	69
4.00	81	80	78	80	78	77	77	76	75	70
5.00	82	81	80	81	79	78	78	77	76	71
ROOM INDEX	UF(total)									Direct
According to DIN EN 13032-2 2004			Suspended					SHRNOM = 1.25		

C Range: 0 - 360DEG
C Interval: 30.0DEG
Test Speed: HIGH
Temperature:25.3℃
Operators:Zoe
Test Date:2022-11-2

γ Range: 0 - 180DEG
γ Interval: 1.0DEG
Test System:EVERFINE GO-SPEX500_V1 SYSTEM V2.00.416
Humidity:65.0%
Test Distance:3.160m [K=1.0000]
Remarks: LAMP:CMA1306-0000-000F0U0A30G Ra:90
LENS:PM-1084C 50R
NO DRIVER:500mA
30minutes warm-up

ISOCANDELA DIAGRAM

Test:U:18.728V I:0.4998A P:9.3602W PF:1.0000 Freq:59.98Hz Lamp Flux:919.82x1 lm		
NAME: 2118.565-LEA-09B	TYPE:	WEIGHT:
SPEC.: 3000K	DIM.:	SERIAL No.: 2211021100
MFR.: RISE	SUR.: 0.001256m2	Shielding Angle:

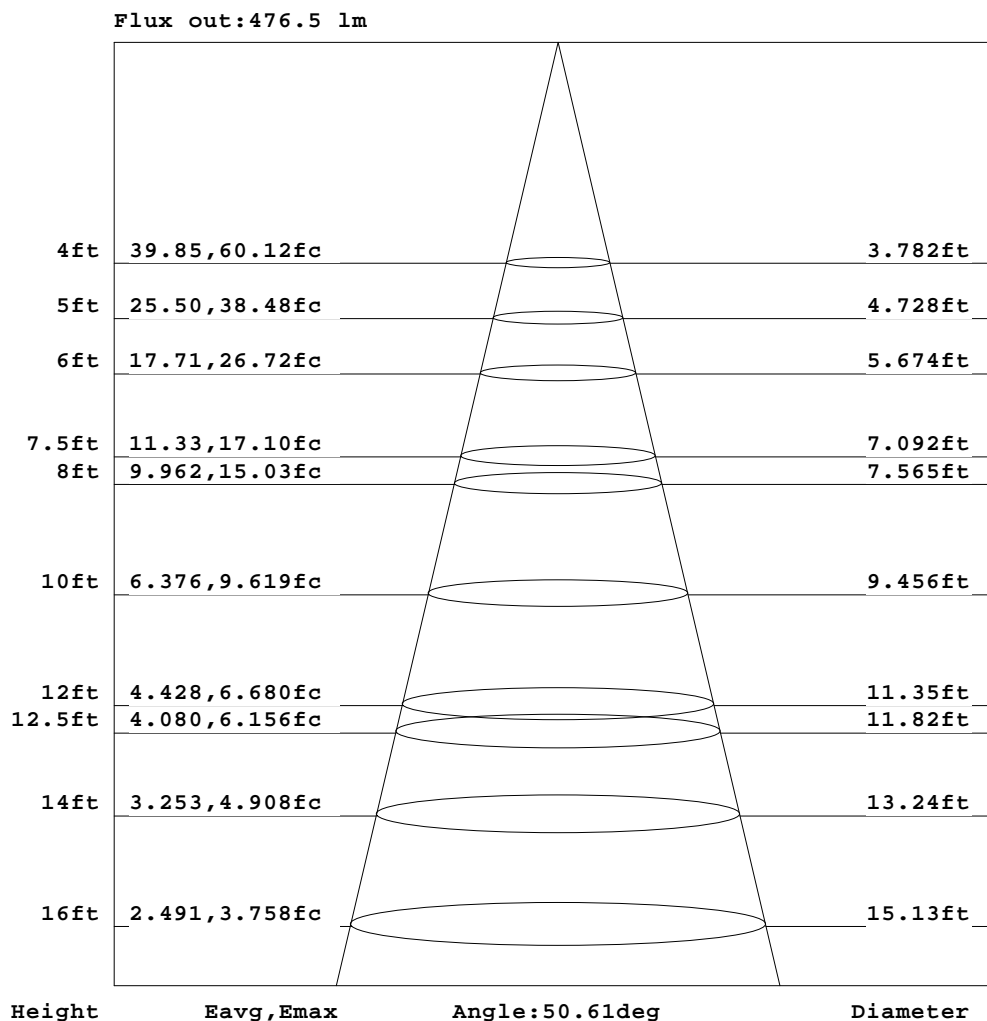


C Range: 0 - 360DEG
C Interval: 30.0DEG
Test Speed: HIGH
Temperature: 25.3 °C
Operators: Zoe
Test Date: 2022-11-2

γ Range: 0 - 180DEG
γ Interval: 1.0DEG
Test System: EVERFINE GO-SPEX500_V1 SYSTEM V2.00.416
Humidity: 65.0%
Test Distance: 3.160m [K=1.0000]
Remarks: LAMP: CMA1306-0000-000F0U0A30G Ra: 90
LENS: PM-1084C 50R
NO DRIVER: 500mA
30minutes warm-up

AAI Figure

Test:U:18.728V I:0.4998A P:9.3602W PF:1.0000 Freq:59.98Hz Lamp Flux:919.82x1 lm		
NAME: 2118.565-LEA-09B	TYPE:	WEIGHT:
SPEC.: 3000K	DIM.:	SERIAL No.: 2211021100
MFR.: RISE	SUR.: 0.001256m2	Shielding Angle:



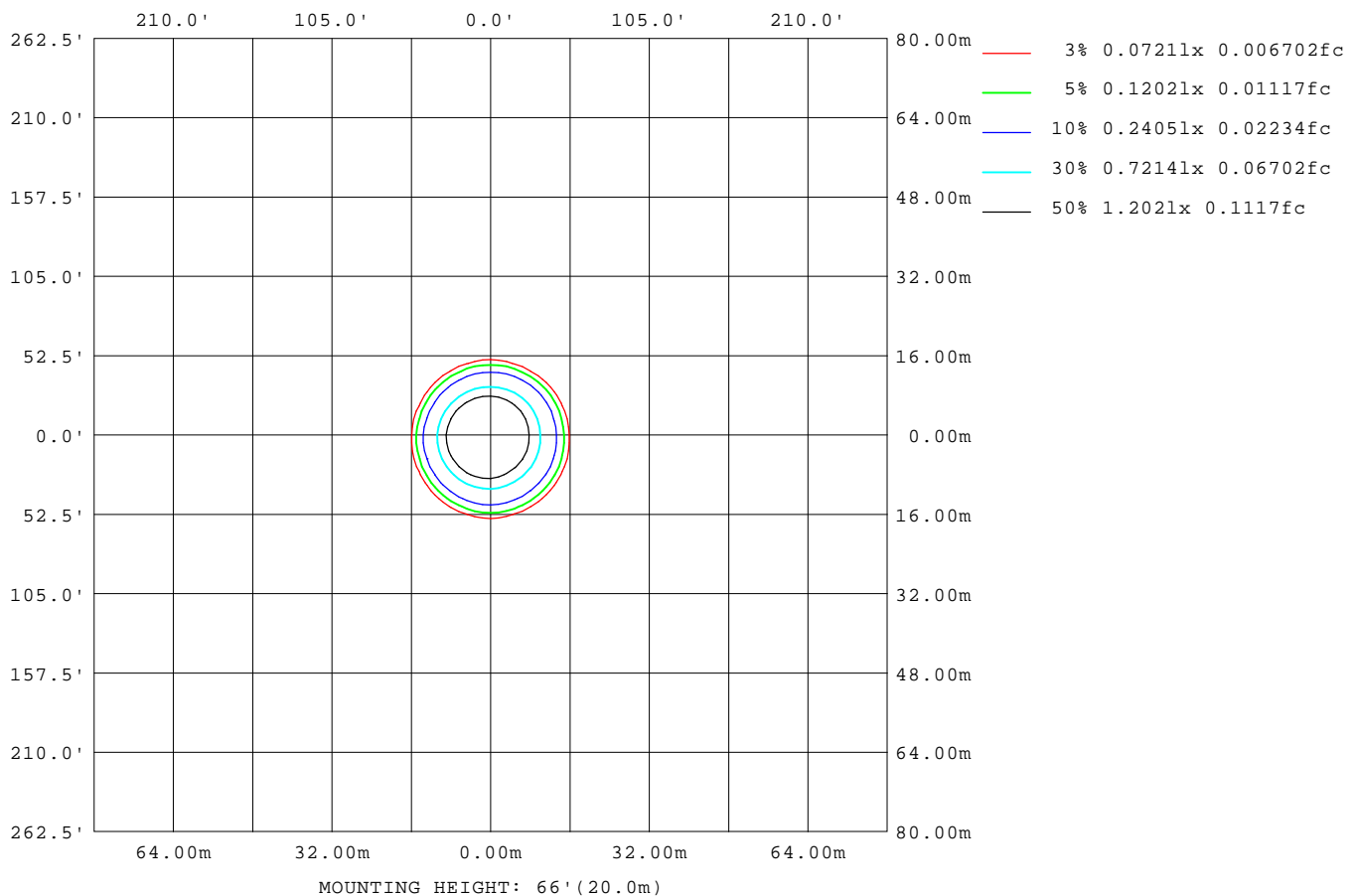
Note: The Curves indicate the illuminated area and the average illumination when the luminaire is at different distance.

C Range: 0 - 360DEG
C Interval: 30.0DEG
Test Speed: HIGH
Temperature: 25.3 °C
Operators: Zoe
Test Date: 2022-11-2

γ Range: 0 - 180DEG
γ Interval: 1.0DEG
Test System: EVERFINE GO-SPEX500_V1 SYSTEM V2.00.416
Humidity: 65.0%
Test Distance: 3.160m [K=1.0000]
Remarks: LAMP: CMA1306-0000-000F0U0A30G Ra: 90
LENS: PM-1084C 50R
NO DRIVER: 500mA
30minutes warm-up

ISOLUX DIAGRAM

Test:U:18.728V I:0.4998A P:9.3602W PF:1.0000 Freq:59.98Hz Lamp Flux:919.82x1 lm		
NAME: 2118.565-LEA-09B	TYPE:	WEIGHT:
SPEC.: 3000K	DIM.:	SERIAL No.: 2211021100
MFR.: RISE	SUR.: 0.001256m2	Shielding Angle:



C Range: 0 - 360DEG
C Interval: 30.0DEG
Test Speed: HIGH
Temperature:25.3 °C
Operators:Zoe
Test Date:2022-11-2

γ Range: 0 - 180DEG
γ Interval: 1.0DEG
Test System:EVERFINE GO-SPEX500_V1 SYSTEM V2.00.416
Humidity:65.0%
Test Distance:3.160m [K=1.0000]
Remarks: LAMP:CMA1306-0000-000F0U0A30G Ra:90
LENS:PM-1084C 50R
NO DRIVER:500mA
30minutes warm-up

LED Avg.L Report

Test:U:18.728V I:0.4998A P:9.3602W PF:1.0000 Freq:59.98Hz Lamp Flux:919.82x1 lm		
NAME: 2118.565-LEA-09B	TYPE:	WEIGHT:
SPEC.: 3000K	DIM.:	SERIAL No.: 2211021100
MFR.: RISE	SUR.: 0.001256m2	Shielding Angle:

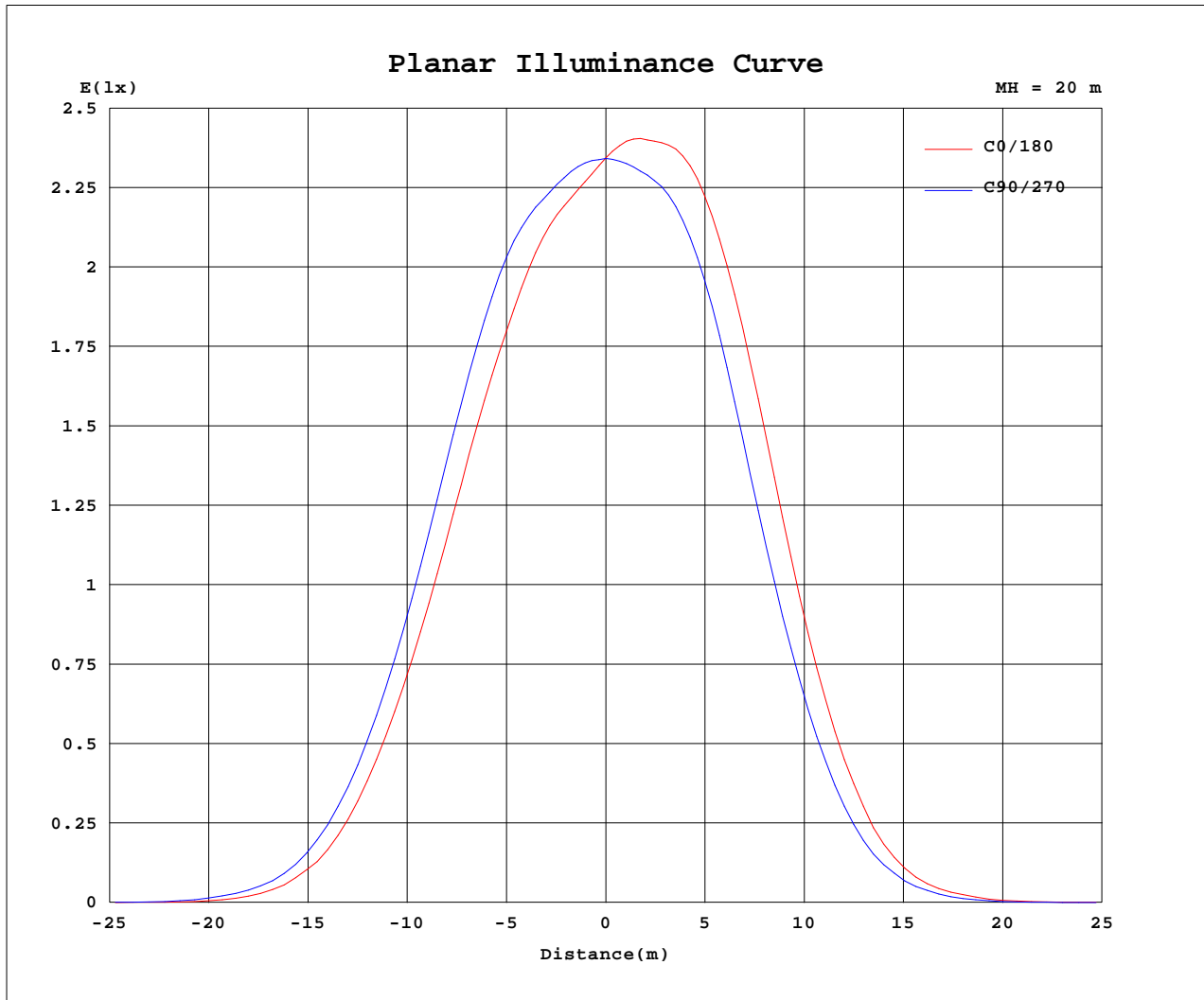
AvgL	cd/m2
L_0~180(65)av	1296
L_0~180(75)av	1017
L_0~180(85)av	852
L_90~270(65)av	1321
L_90~270(75)av	1014
L_90~270(85)av	798
L_45(65)av	1292
L_45(75)av	999
L_45(85)av	778

Standard: GB/T 29293-2012

C Range: 0 - 360DEG
C Interval: 30.0DEG
Test Speed: HIGH
Temperature:25.3℃
Operators:Zoe
Test Date:2022-11-2

γ Range: 0 - 180DEG
γ Interval: 1.0DEG
Test System:EVERFINE GO-SPEX500_V1 SYSTEM V2.00.416
Humidity:65.0%
Test Distance:3.160m [K=1.0000]
Remarks: LAMP:CMA1306-0000-000F0U0A30G Ra:90
LENS:PM-1084C 50R
NO DRIVER:500mA
30minutes warm-up

Planar Illuminance Curve



C Range: 0 - 360DEG
 C Interval: 30.0DEG
 Test Speed: HIGH
 Temperature: 25.3 °C
 Operators: Zoe
 Test Date: 2022-11-2

γ Range: 0 - 180DEG
 γ Interval: 1.0DEG
 Test System: EVERFINE GO-SPEX500_V1 SYSTEM V2.00.416
 Humidity: 65.0%
 Test Distance: 3.160m [K=1.0000]
 Remarks: LAMP: CMA1306-0000-000F0U0A30G Ra:90
 LENS: PM-1084C 50R
 NO DRIVER: 500mA
 30minutes warm-up



LUMINOUS DISTRIBUTION INTENSITY DATA

Test:U:18.728V I:0.4998A P:9.3602W PF:1.0000 Freq:59.98Hz Lamp Flux:919.82x1 lm		
NAME: 2118.565-LEA-09B	TYPE:	WEIGHT:
SPEC.: 3000K	DIM.:	SERIAL No.: 2211021100
MFR.: RISE	SUR.: 0.001256m2	Shielding Angle:

Table--1

UNIT: cd

C(DEG) γ (DEG)	0	30	60	90	120	150	180	210	240	270	300	330						
0	937	937	937	937	937	937	937	937	937	937	937	937						
5	897	898	911	932	950	964	973	970	953	932	916	904						
10	856	860	881	917	950	982	993	984	951	918	893	873						
15	769	789	812	877	922	950	959	930	868	833	804	781						
20	635	664	690	758	807	818	820	766	695	651	639	635						
25	458	493	522	570	601	605	584	522	460	431	436	451						
30	278	313	333	363	370	360	332	280	243	228	243	263						
35	122	148	163	179	171	154	134	108	93.8	87.0	93.4	109						
40	36.6	48.6	56.4	61.9	59.4	47.3	39.6	31.0	27.7	24.2	27.3	31.1						
45	7.03	9.89	13.0	17.2	14.0	11.1	8.50	6.54	4.52	3.58	3.60	5.83						
50	1.61	1.75	1.91	2.25	2.26	1.99	1.69	1.49	1.32	1.18	1.18	1.34						
55	1.05	1.10	1.11	1.16	1.14	1.12	1.12	1.01	0.91	0.88	0.88	0.94						
60	0.83	0.79	0.79	0.81	0.81	0.82	0.87	0.81	0.79	0.78	0.78	0.78						
65	0.66	0.66	0.67	0.69	0.70	0.70	0.72	0.70	0.70	0.71	0.69	0.67						
70	0.44	0.46	0.48	0.52	0.52	0.51	0.51	0.48	0.46	0.45	0.43	0.44						
75	0.30	0.32	0.34	0.36	0.36	0.36	0.36	0.33	0.31	0.30	0.29	0.29						
80	0.18	0.19	0.21	0.23	0.23	0.22	0.22	0.20	0.19	0.18	0.16	0.17						
85	0.08	0.09	0.09	0.11	0.11	0.11	0.11	0.09	0.08	0.07	0.06	0.06						
90	0.00	0.00	0.00	0.00	0.00	0.00	0.00	0.00	0.00	0.00	0.00	0.00						
95	0.00	0.00	0.00	0.00	0.00	0.00	0.00	0.00	0.00	0.00	0.00	0.00						
100	0.00	0.00	0.00	0.00	0.00	0.00	0.00	0.00	0.00	0.00	0.00	0.00						
105	0.00	0.00	0.00	0.00	0.00	0.00	0.00	0.00	0.00	0.00	0.00	0.00						
110	0.00	0.00	0.00	0.00	0.00	0.00	0.00	0.00	0.00	0.00	0.00	0.00						
115	0.00	0.00	0.00	0.00	0.00	0.00	0.00	0.00	0.00	0.00	0.00	0.00						
120	0.00	0.00	0.00	0.00	0.00	0.00	0.00	0.00	0.00	0.00	0.00	0.00						
125	0.00	0.00	0.00	0.00	0.00	0.00	0.00	0.00	0.00	0.00	0.00	0.00						
130	0.00	0.00	0.00	0.00	0.00	0.00	0.00	0.00	0.00	0.00	0.00	0.00						
135	0.00	0.00	0.00	0.00	0.00	0.00	0.00	0.00	0.00	0.00	0.00	0.00						
140	0.00	0.00	0.00	0.00	0.00	0.00	0.00	0.00	0.00	0.00	0.00	0.00						
145	0.00	0.00	0.00	0.00	0.00	0.00	0.00	0.00	0.00	0.00	0.00	0.00						
150	0.00	0.00	0.00	0.00	0.00	0.00	0.00	0.00	0.00	0.00	0.00	0.00						
155	0.00	0.00	0.00	0.00	0.00	0.00	0.00	0.00	0.00	0.00	0.00	0.00						
160	0.00	0.00	0.00	0.00	0.00	0.00	0.00	0.00	0.00	0.00	0.00	0.00						
165	0.00	0.00	0.00	0.00	0.00	0.00	0.00	0.00	0.00	0.00	0.00	0.00						
170	0.00	0.00	0.00	0.00	0.00	0.00	0.00	0.00	0.00	0.00	0.00	0.00						
175	0.00	0.00	0.00	0.00	0.00	0.00	0.00	0.00	0.00	0.00	0.00	0.00						
180	0.00	0.00	0.00	0.00	0.00	0.00	0.00	0.00	0.00	0.00	0.00	0.00						

C Range: 0 - 360DEG
C Interval: 30.0DEG
Test Speed: HIGH
Temperature:25.3℃
Operators:Zoe
Test Date:2022-11-2

γ Range: 0 - 180DEG
γ Interval: 1.0DEG
Test System:EVERFINE GO-SPEX500_V1 SYSTEM V2.00.416
Humidity:65.0%
Test Distance:3.160m [K=1.0000]
Remarks: LAMP:CMA1306-0000-000F0U0A30G Ra:90
LENS:PM-1084C 50R
NO DRIVER:500mA
30minutes warm-up